

## Motion detectors

# IS 360-3

white

EAN 4007841 006532



infrared sensor  
360°



max. 12 m

2000w

max. 2000 W



IP54



2 - 1000 lux



5 sec - 15 min



Ideal 2 m



energy saving



3 JAHRE  
HERSTELLER  
GARANTIE  
steinel.de/garantie



CE

## Function description

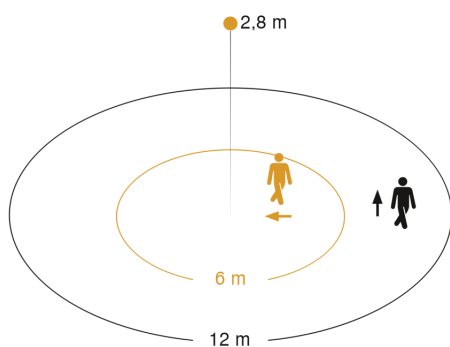
The multi-talent for indoors and outdoors. Infrared wall sensor IS 360-3, ideal for mounting under soffits, in carports, on large building facades and driveways, 3 pyro sensors for a 360° angle of coverage, reach can be set up to 12 m, selectable time and twilight threshold, detection zone can be customised with shrouds.

## Technical specifications

|   |  |
|---|--|
| Type  | Motion detectors                             |
| Dimensions (Ø x H)                            | 121 x 57 mm                                  |
| Mains power supply                            | 220 – 240 V / 50 – 60 Hz                     |
| Sensor Technology                             | passive infrared                             |
| Application, place                            | Outdoors, Indoors                            |
| Application, place, room                      | outdoors, all round the building,<br>Indoors |
| Installation site                             | ceiling                                      |
| Installation                                  | Surface wiring                               |
| Switching zones                               | 972 switching zones                          |
| Electronic scalability                        | No   |
| Mechanical scalability                        | No   |
| Mounting height                               | 2,50 – 6,00 m                                |
| Optimum mounting height                       | 2,8 m  |
| Detection angle                               | 360 °  |
| Angle of aperture                             | 90 °   |
| Sneak-by guard                                | Yes  |
| Capability of masking out individual segments | Yes  |
| Reach, radial                                 | Ø 12 m (113 m²)                              |

|  |                |
|--|----------------|
| Twilight setting TEACH                                 | No             |
| Twilight setting                                       | 2 – 1000 lx    |
| Time setting   | 5 s – 15 Min.  |
| Switching output 1, resistive                          | 2000 W         |
| Switching output 1, number of LEDs / fluorescent lamps | 8 pcs.         |
| Constant-lighting control                              | No             |
| Basic light level function                             | No             |
| Settings via   | Potentiometers |
| With remote control                                    | No             |
| Interconnection  | Yes            |
| IP-rating  | IP54           |
| Material   | Plastic        |
| Ambient temperature                                    | -20 – 50 °C    |
| Colour   | white          |
| Colour, RAL  | 9010           |
| Manufacturer's Warranty                                | 3 years        |
| Version  | white          |
| PU1, EAN   | 4007841006532  |

## Detection Zone

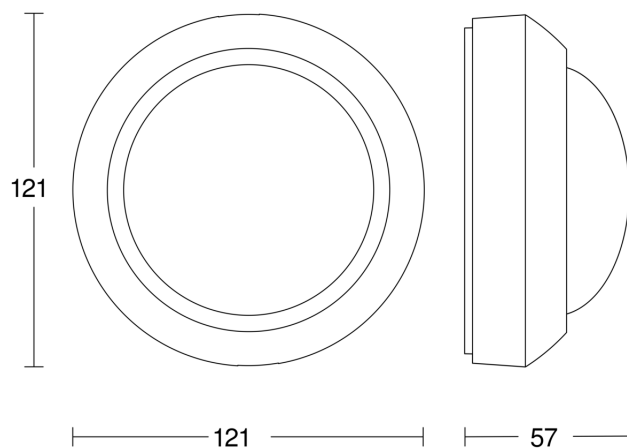


Mögliche Montagehöhe: 2,50 m – 6,00 m

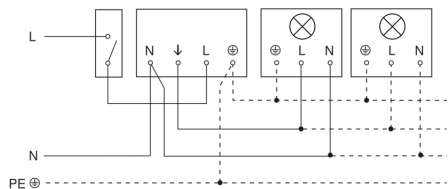
Orange: radial

Schwarz: tangential

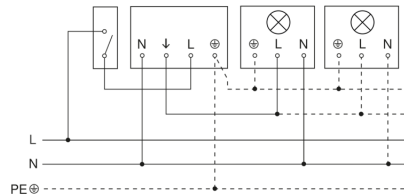
## Dimension Drawing



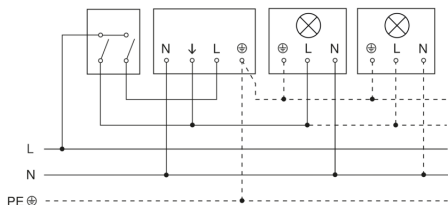
## Light without neutral conductor



## Light with neutral conductor



## Connection using two-circuit switch for manual and automatic operation



## Connection via a two-way switch for manual override and automatic operation

